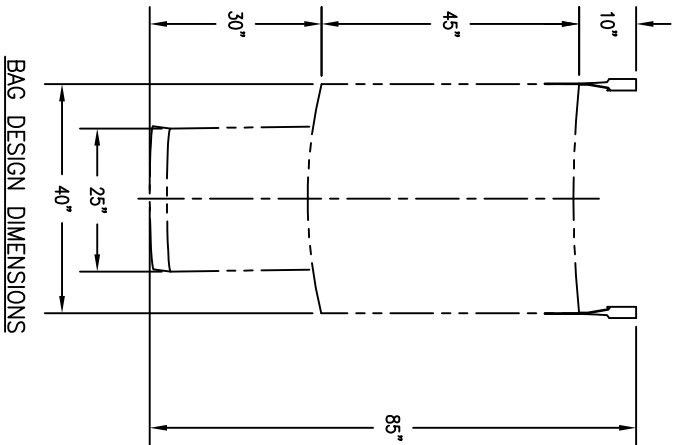
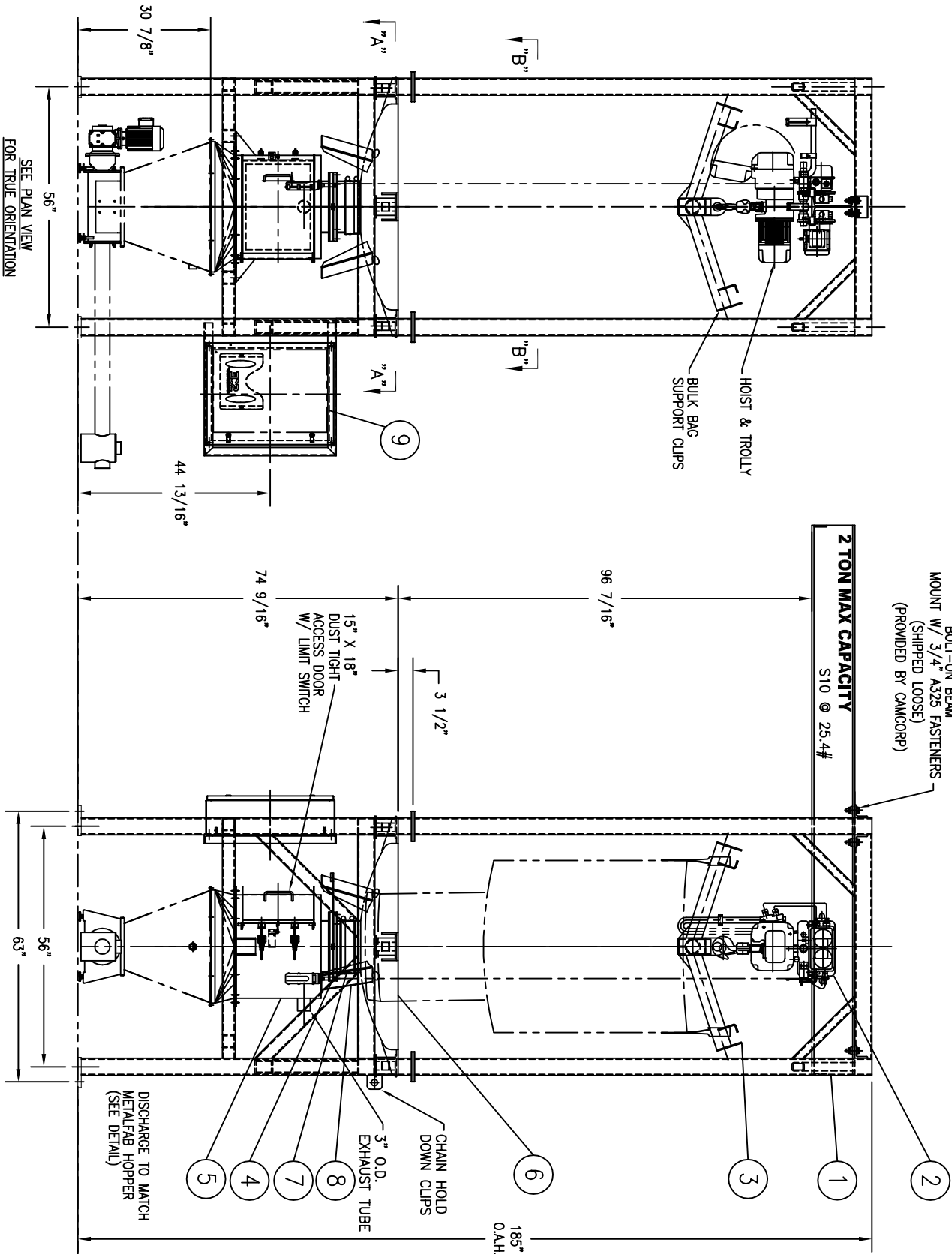
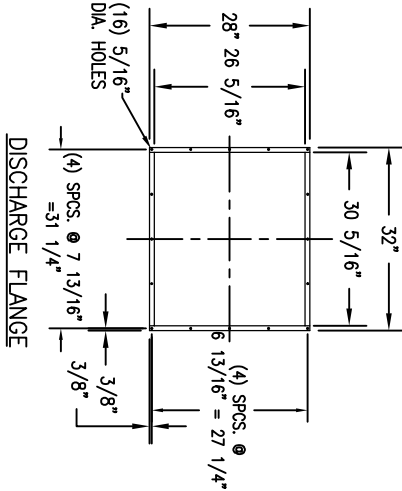


ITEM	QTY	DESCRIPTION
1	1	SUPPORT STRUCTURE
2	1	HOIST & TROLLEY W/ ADDITIONAL 6' CABLE LENGTH
3	1	LIFT CARRIAGE SUPPORT FRAME, SEE 4622-D1
4	1	12" MANUAL IRIS VALVE
5	1	CONTAINMENT HOPPER, SEE 4622-D1
6	1	DISHED HEAD BAG SUPPORT SEE 4622-D1
7	1	12 1/2" DIA. X 6" DIACRON TWILL SLEEVE
8	4	AIR OPERATED BOTTOM BAG PUNCHERS SEE 4622-D1
9	1	CONTROL PANEL (FACTORY MOUNTED & PLUMBED)



SEE PLAN VIEW
FOR TRUE ORIENTATION

REF: 4483-1

APPLICATION SPECIFICATIONS

BAG SIZE	2,000 LB.		
PRODUCT	UNKNOWN		
MATERIAL OF CONSTRUCTION			
CAP/GAS:	N/A	DAP/PRODUCT:	N/A
SUPPORTS:	CARBON STEEL	LADDER:	N/A
HOPPER:	#12 GA. CARBON STEEL	TUBE SHEET:	N/A
ROOF:	N/A	WALKING SURFACE:	N/A
MATERIAL FINISHES			
INTERIOR CAP PAINT:	N/A		
EXTERIOR CAP PAINT:	N/A		
INTERIOR DAP PAINT:	NONE		
EXTERIOR DAP PAINT:	PRIMED & PAINTED WHITE KEM 400 ENAMEL		
PLAT./ADD. PAINT:	N/A		
STRUCT. SUPP. PAINT:	PRIMED & PAINTED WHITE KEM 400 ENAMEL		
INTERIOR CAP WELDS:	N/A		
EXTERIOR CAP WELDS:	N/A		
INTERIOR DAP WELDS:	STITCH		
EXTERIOR DAP WELDS:	CONTINUOUS		
SPECIAL NOTES:			

(1) UNIT REQUIRED

REV	CHANGED FEEDER TRANSITION	BY	DATE
REV1		AJH	7/2/14



9732 PULHAM ROAD, LENOVA, KS 66215 PHONE: 913-631-0740 FAX: 913-631-9271

THIS DRAWING AND THE SOLUTIONS/DESIGNS ARE THE PROPERTY OF CAMCORP, INC. AND ARE FURNISHED ONLY FOR INFORMATIONAL PURPOSES ON A CONFIDENTIAL BASIS. REPRODUCTION, PUBLISHING, OR OTHER DISCLOSURES ARE ON A "NEED TO KNOW" BASIS ONLY. ANY OTHER REPRODUCTION REQUIRES WRITTEN AUTHORIZATION BY A CORPORATE OFFICER.

CERTIFIED
FOR CONSTRUCTION
PURPOSES

DATE: 7/8/14

SIGNATURE: John Adams

CAMCORP, INC.

CUSTOMER:		ROBERTSON EQUIPMENT CO., INC.	
		PATRIOT RENEWABLE FUELS, LLC.	
TITLE:	MODEL BBU4000-H BULK BAG UNLOADER	P.O. NUMBER:	16589
DRAWN:	TDK	DATE:	6/25/14
JOB NUMBER:	CC4622-C	DRAWING NUMBER:	4622-1r01